

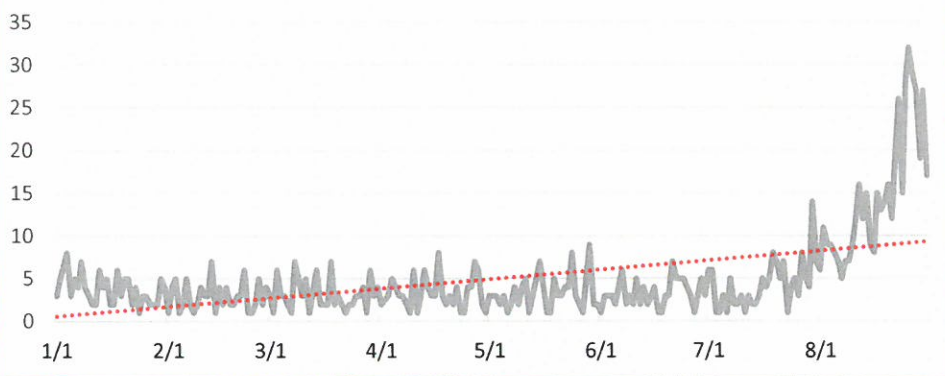


National Poison Data System (NPDS) Bulletin COVID-19 (Ivermectin)

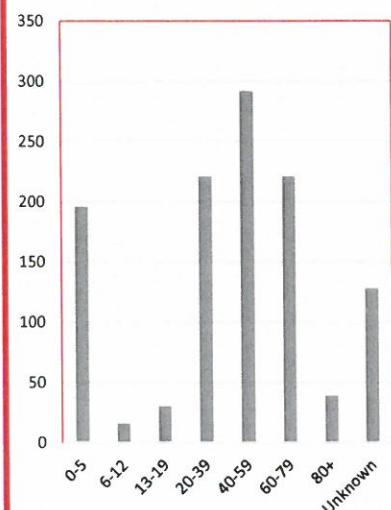
**Ivermectin Case Counts
2020 vs. 2021
(January 1 - August 31)**

Month	2020	2021
Jan.	26	112
Feb.	40	82
Mar.	48	90
Apr.	71	97
May	73	91
Jun.	61	79
Jul.	58	133
Aug.	58	459
TOTAL	435	1,143

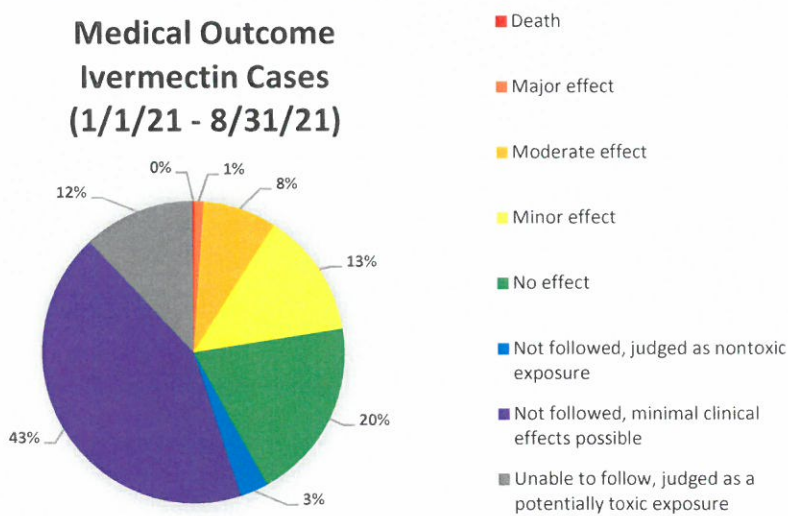
**Case Counts
Ivermectin Cases
(1/1/21 - 8/31/21)**



**Age Distribution
Ivermectin Cases
(1/1/21 - 8/31/21)**



**Medical Outcome
Ivermectin Cases
(1/1/21 - 8/31/21)**



* Confirmed nonexposure and Unrelated effect cases are not included in this pie chart

* Single and multiple exposure cases included; additional NPDS data is required to correlate cases with outcomes.

<https://aapcc.org/data-system>

Gender Distribution Ivermectin Cases (1/1/21 - 8/31/21)

Male	563	49.3%
Female	566	49.5%
Unknown	14	1.2%

4601 N. FAIRFAX DR. • SUITE 630
ARLINGTON, VA 22203
MAIN 703.894.1858
FAX 703.683.2812
E-MAIL INFO@AAPCC.ORG
WWW.AAPCC.ORG

Results: According to data retrieved from the National Poison Data System (NPDS), there were 1,143 Ivermectin exposure cases reported to the 55 U.S. Poison Control Centers (Jan. 1, 2021 through Aug. 31, 2021), which resulted in an increase of 163% compared to the same time period during the previous year.

Call 1-800-222-1222 for poison emergencies or questions. This nationwide number is answered by the Poison Center that serves you.